



# WEDnetPA

2023-2024 PROGRAM REPORT



**25**  
1999-2024

## ▶ THE PASSING OF THE TORCH

I'm writing this opening letter — my first as the new Executive Program Officer of WEDnetPA — just as the summer games in Paris have ended.

As is tradition, the closing ceremony for the games featured the passing of the torch. Watching the symbolic sharing of the flame, I began reflecting on the past weeks I've spent transitioning into this new position.

The torch passing is a gesture of trust, representing the seamless handoff of the games' guardianship from one host country to another. It's an act of goodwill acknowledging and celebrating the past while looking forward to the hope and promise of the future. In many ways, it parallels the transfer of leadership here at WEDnetPA between outgoing Statewide Director Tom Venditti and me.

Tom's 19-year tenure at the helm of WEDnetPA has been transformative. His guidance has been instrumental in shaping the program into the thriving workforce development initiative it is today. Under his stewardship, WEDnetPA reached its 25th anniversary this year, a milestone celebrated alongside employers and their employees, the Pennsylvania Department of Community & Economic Development, and the partner network. Tom's dedication played a crucial role in this achievement.

As I step into this role, I am committed to upholding and advancing the legacy of success. Our team is eager to continue supporting Pennsylvania businesses in retaining and developing their talented employees. We are equally excited to contribute to Governor Shapiro's 10-year economic strategy by supporting industry sectors critical to advancing Pennsylvania's economic competitiveness. A skilled workforce is paramount to this plan.

I am honored to lead this remarkable program and looking forward to working with you. Thank you for your support and collaboration.

Let's embark on this journey and achieve great things.

Warm regards,



Shannon Munro  
Executive Program Officer



### Precision Cobotics, LLC

*Robotic automation cells for manufacturers*  
Lancaster County

*WEDnetPA enables us to address the workforce shortage by investing in the team we already have to become more valuable members of our business. This in turn helps with acquiring new employees as our workers become our best recruiters.*

**John Bridgen**  
*President*

# ▶ A SUMMARY OF 2023-2024

703 COMPANIES SERVED

<h1 style="margin: 0;">\$10,483,461</h1> <p style="margin: 0; font-weight: bold;">TOTAL FUNDS INVESTED</p>	<h1 style="margin: 0;">24,055</h1> <p style="margin: 0; font-weight: bold;">EMPLOYEES TRAINED</p>
--	---



## TRAINING PROVIDER CHOICE IS COMPANY-DRIVEN

	Partner Provider	In-House Provider	Third-Party Provider
FY 23-24	<b>14%</b>	<b>4%</b>	<b>82%</b>
Running Average	<b>14%</b>	<b>13%</b>	<b>73%</b>

## COMPANIES OF ALL SIZES BENEFIT

Small companies received more training dollars than any other group and accounted for more than one-half of all companies served.

FY 2023-24 Company Size	Training Funds	%	Employees Trained	%	Companies Served	%
100 employees or less	<b>\$3,793,965</b>	<b>36%</b>	<b>6,637</b>	<b>28%</b>	<b>391</b>	<b>56%</b>
101 to 250 employees	<b>\$2,626,393</b>	<b>25%</b>	<b>6,996</b>	<b>29%</b>	<b>175</b>	<b>25%</b>
251 to 500 employees	<b>\$2,196,583</b>	<b>21%</b>	<b>5,640</b>	<b>23%</b>	<b>87</b>	<b>12%</b>
More than 500 employees	<b>\$1,866,520</b>	<b>18%</b>	<b>4,782</b>	<b>20%</b>	<b>50</b>	<b>7%</b>
<b>Total</b>	<b>\$10,483,461</b>	<b>100%</b>	<b>24,055</b>	<b>100%</b>	<b>703</b>	<b>100%</b>

### ARCH Medical Solutions

*Manufacturer of products for the medical device industry*

Montgomery County

*WEDnetPA has been a great asset, helping us keep our employees' skills up to date and motivated to continue to learn.*

**Barbara Easterling**

*Human Resource Manager*

### Carmeuse Lime & Stone, Inc.

*Corporate office, producer of lime and limestone products*

Allegheny County

*The WEDnetPA program enables us to invest more in our most important resource - our people.*

**Denise Hutchison**

*Training Manager*

# TYPES OF TRAINING DELIVERED

SKILLS CATEGORY	\$	%
1 Business Operations	\$2,287,506	22%
2 Computer Operations	\$577,731	5%
3 Health and Science Applications	\$174,111	2%
4 Machine Operations and Maintenance	\$1,083,204	10%
5 Manufacturing Fundamentals	\$1,173,243	11%
6 Manufacturing Technology	\$508,426	5%
7 Product and Process Control	\$705,837	7%
8 Software Implementation	\$345,079	3%
9 Workplace Behavior Skills	\$2,209,681	21%
10 Workplace Health and Safety	\$1,418,643	14%
<b>TOTAL:</b>	<b>\$10,483,461</b>	<b>100%</b>



## LNS Chipblaster, Inc.

High pressure coolant systems for the machine tool industry

Crawford County

Bridging the gap between production and management has been much easier since encouraging both parties to come to the training room together.

Kristine Donlin

HR Business Partner

## Pennsylvania Transformer Technology, Inc.

Manufacturer of large industrial transformers

Washington County

With the support of an exceptional WEDnetPA partner, we were able to invest in our supervisors, focusing on long-term retention and development.

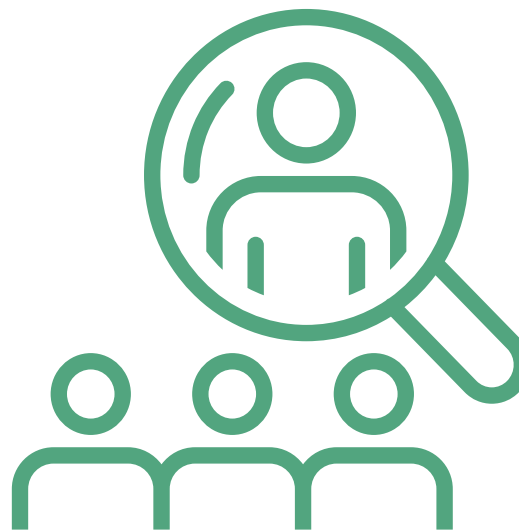
Pamela Florian

Human Resource Manager

# ▶ PENNSYLVANIA COMPANIES REALIZE THE BENEFITS OF WEDNETPA'S WORKFORCE TRAINING

WEDnetPA conducted a survey of the 667 Pennsylvania companies that received WEDnetPA funds in FY 2023–24 to determine the impact of the program. Of the 269 companies that responded to the survey:

82%	Described improved product/service quality
67%	Saw an increase in employee morale
64%	Benefitted from improved communications and/or teamwork
48%	Said their workplace was safer, with fewer accidents
39%	Reported training aided in job retention (layoff avoidance)
39%	Attributed training to employee pay raises
37%	Noted training led to employee promotions
19%	Commented that training led to an increase in business



## 25 YEARS OF SUCCESS FOR WEDNETPA AND PENNSYLVANIA

Since its beginning in 1999, WEDnetPA has grown to become the primary delivery system for Pennsylvania's incumbent workforce training. Each year, WEDnetPA partners continue to reach out to a significant number of companies and employees — strengthening our workforce and businesses and, in turn, strengthening Pennsylvania's economy.

**APRIL 19, 1999 – JUNE 30, 2024**

Workers Trained	Companies Served
1,352,493	24,185

### Eagle Ridge Personal Care Home, LLC

*Personal care facility for the elderly  
Clinton County*

*WEDnetPA was greatly beneficial to our small business. We were able to offer training to our staff that would not have been financially possible without this program.*

**Lindsey Penland**  
Administrator

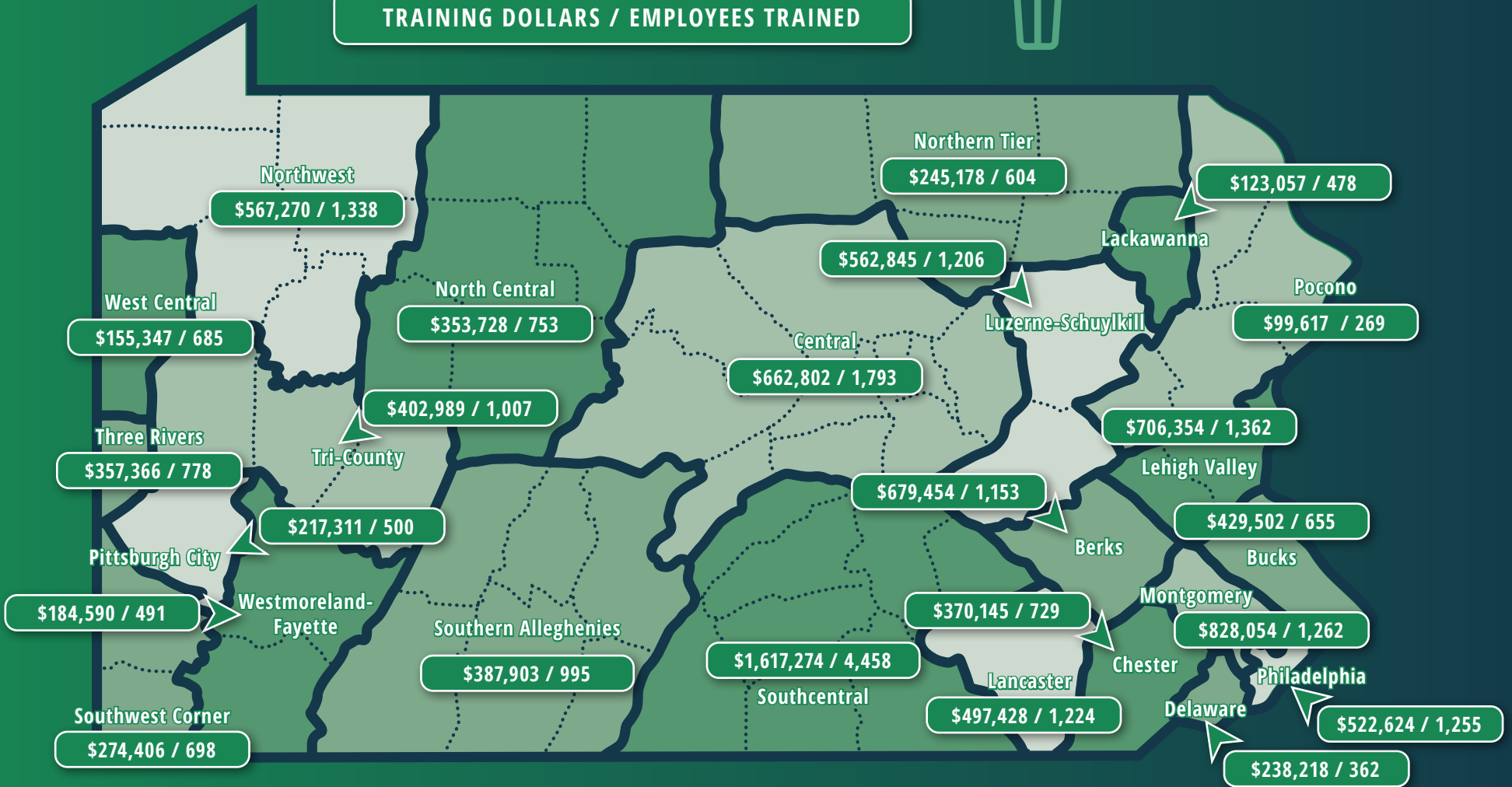
# FY 2023-24 TRAINING INVESTMENT

## BY WORKFORCE DEVELOPMENT BOARD (WDB)

TRAINING DOLLARS	\$10,483,461
EMPLOYEES TRAINED	24,055



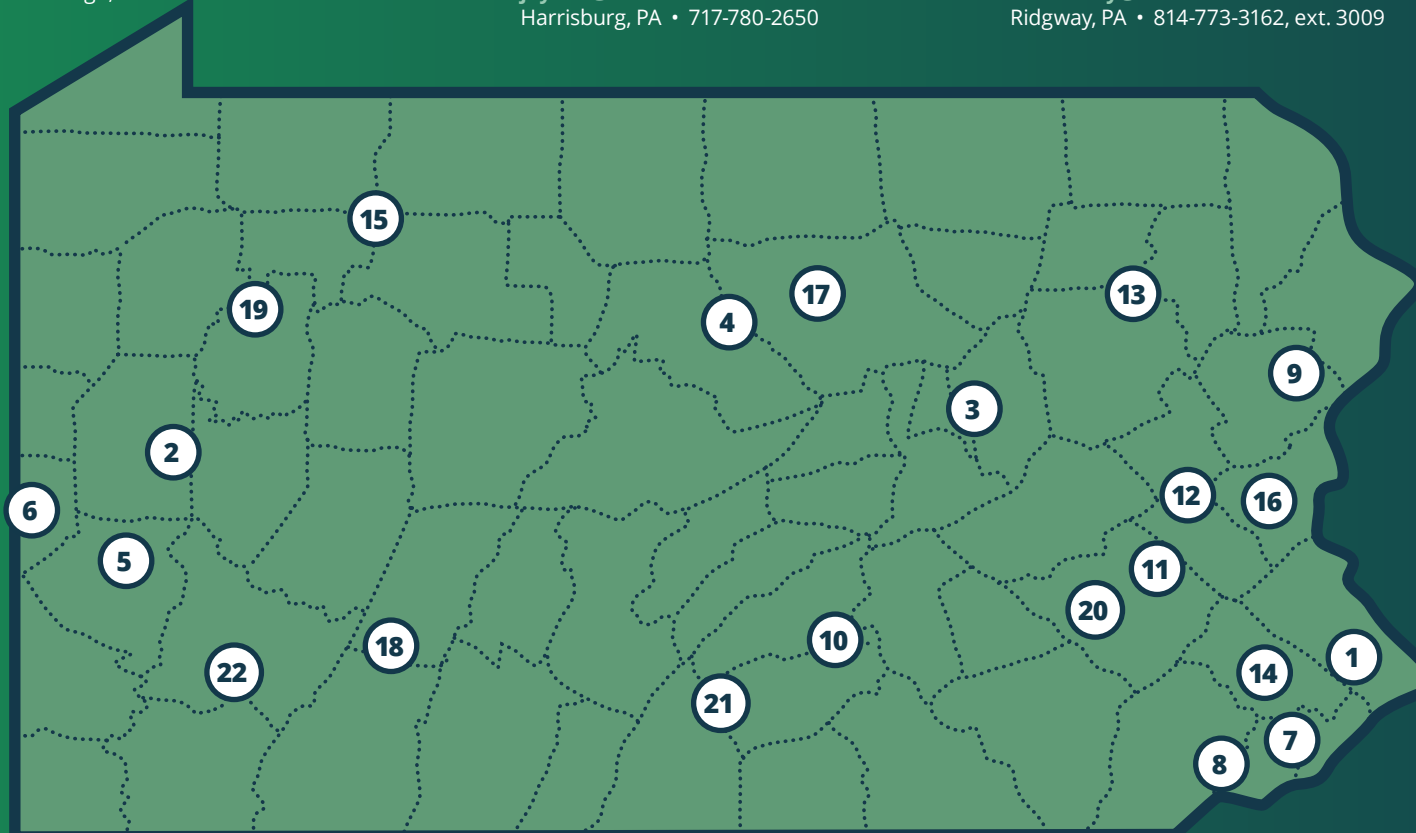
TRAINING DOLLARS / EMPLOYEES TRAINED



# ▶ PENNSYLVANIA EMPLOYERS

can apply for training funds online and through any of these participating WEDnetPA partners:

- |  |  |   |  |
|--|--|---|--|
| 1. Bucks County Community College<br><a href="mailto:stephanie.wenger@bucks.edu">stephanie.wenger@bucks.edu</a><br>Newtown, PA • 215-968-8478                | 6. Community College of Beaver County<br><a href="mailto:maria.brown@cdbc.edu">maria.brown@cdbc.edu</a><br>Monaca, PA • 724-480-3448             | 11. Kutztown University of Pennsylvania<br><a href="mailto:hensley@kutztown.edu">hensley@kutztown.edu</a><br>Kutztown, PA • 610-401-3236  | 16. Northampton Community College<br><a href="mailto:dholub@northampton.edu">dholub@northampton.edu</a><br>Bethlehem, PA • 610-861-4158                |
| 2. Butler County Community College<br><a href="mailto:kathleen.strobel@bc3.edu">kathleen.strobel@bc3.edu</a><br>Butler, PA • 724-287-8711, ext. 8267         | 7. Community College of Philadelphia<br><a href="mailto:mdugan@ccp.edu">mdugan@ccp.edu</a><br>Philadelphia, PA • 215-496-6155                    | 12. Lehigh Carbon Community College<br><a href="mailto:jtrumbauer@lccc.edu">jtrumbauer@lccc.edu</a><br>Schnecksville, PA • 610-799-1942   | 17. Pennsylvania College of Technology<br><a href="mailto:aml36@pct.edu">aml36@pct.edu</a><br>Williamsport, PA • 570-320-2400, ext. 7011               |
| 3. Commonwealth University of PA - Bloomsburg<br><a href="mailto:jwilliam@commonwealthu.edu">jwilliam@commonwealthu.edu</a><br>Bloomsburg, PA • 570-389-4004 | 8. Delaware County Community College<br><a href="mailto:mwallace@dccc.edu">mwallace@dccc.edu</a><br>Media, PA • 610-355-7146                     | 13. Luzerne County Community College<br><a href="mailto:sspry@luzerne.edu">sspry@luzerne.edu</a><br>Nanticoke, PA • 570-740-0480  | 18. Pennsylvania Highlands Community College<br><a href="mailto:jdavis@pennhighlands.edu">jdavis@pennhighlands.edu</a><br>Johnstown, PA • 814-262-3813 |
| 4. Commonwealth University of PA - Lock Haven<br><a href="mailto:anh1227@commonwealthu.edu">anh1227@commonwealthu.edu</a><br>Lock Haven, PA • 570-484-3131   | 9. East Stroudsburg University of Pennsylvania<br><a href="mailto:bbetarie@esu.edu">bbetarie@esu.edu</a><br>East Stroudsburg, PA • 570-422-3045  | 14. Montgomery County Community College<br><a href="mailto:bdebias@mc3.edu">bdebias@mc3.edu</a><br>Blue Bell, PA • 610-718-1967   | 19. Pennsylvania Western University<br><a href="mailto:jbest@pennwest.edu">jbest@pennwest.edu</a><br>Clarion, PA • 814-393-2060                        |
| 5. Community College of Allegheny County<br><a href="mailto:roverton@ccac.edu">roverton@ccac.edu</a><br>Pittsburgh, PA • 412-788-7536                        | 10. HACC, Central Pennsylvania's<br>Community College<br><a href="mailto:jllynch@hacc.edu">jllynch@hacc.edu</a><br>Harrisburg, PA • 717-780-2650 | 15. North Central Pennsylvania Regional<br>Planning & Development Commission<br><a href="mailto:ddelhunty@ncentral.com">ddelhunty@ncentral.com</a><br>Ridgway, PA • 814-773-3162, ext. 3009 | 20. Reading Area Community College<br><a href="mailto:dlersch@racc.edu">dlersch@racc.edu</a><br>Reading, PA • 610-372-4721, ext. 6208                  |
|  |  |   | 21. Shippensburg University of Pennsylvania<br><a href="mailto:cjezel@ship.edu">cjezel@ship.edu</a><br>Shippensburg, PA • 717-477-1123, ext. 3381      |
|  |  |   | 22. Westmoreland County Community College<br><a href="mailto:dewittju@westmoreland.edu">dewittju@westmoreland.edu</a><br>Youngwood, PA • 724-925-4090  |



## THE WEDNETPA PARTNERSHIP

WEDnetPA includes State System universities, community colleges, Pennsylvania College of Technology and North Central PA Regional Planning & Development Commission.

Qualified companies receive funding through this alliance of 22 diverse partners throughout the Commonwealth that coordinate the resources of the entire network and serve as the points of contact for businesses accessing training funds.



# WEDnetPA

**Funded by:**



**pennsylvania**  
DEPARTMENT OF COMMUNITY  
& ECONOMIC DEVELOPMENT

**Managed by:**



**Pennsylvania**  
**College of Technology**  
A Penn State Affiliate